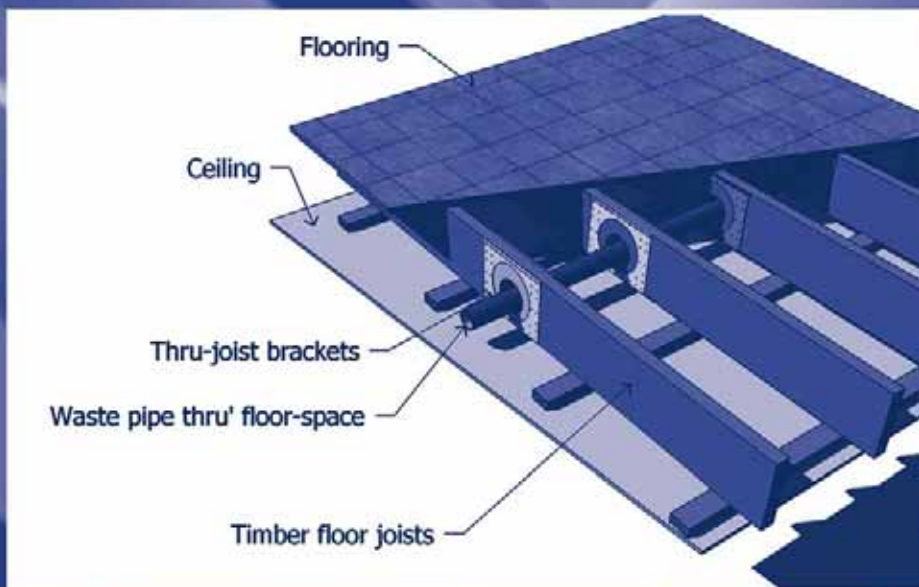


THRTM V JOISTTM

- THR-UJOISTTM brackets enable holes to be cut up to 121mm diameter in flooring joists to allow services to run through the mid floor and other enclosed areas, without affecting the strength and stiffness requirements of a joist under NZS 3604:1999 and AS 1684.2-2006 (For Radiata Pine up to and including stress grades F8).
- No limitation on where THRU-JOISTTM brackets may be installed along the length of joist.
- Multiple THRU-JOISTTM brackets may be used on the same joist (refer fixing note).
- Alternative BRANZ Appraised Solution to NZS 3604:1999 and Australian Standard AS 1684.2-2006.
- THR-UJOISTTM brackets are a very cost effective, simple to install building method to allow services to run through joists.



NZ Reg. Design

App 410058 - 2007

410059 - 2007

410060 - 2007

410061 - 2007

Aust. Reg Design

318486

318487

318488

318489



BRANZ Appraised
Appraisal No.570 [2007]

The full THRU-JOISTTM Bracket range are available nationwide from leading building supply merchants.

BRACE-ITTM LIMITED designs and markets a range of THRU-JOISTTM brackets and can be contacted at PO Box 558, Whangaparaoa, Auckland 0943, New Zealand.
Phone +64 9 424 0916 Fax +64 9 424 0475
email info@brace-it.com www.brace-it.com

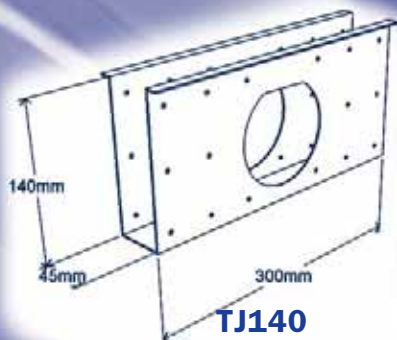
Copyright©2007/2008 Brace-ItTM Limited. All rights reserved.

No copying, distribution or other use of this work is permitted without the express written consent of Brace-ItTM Limited.

THRU-JOIST™

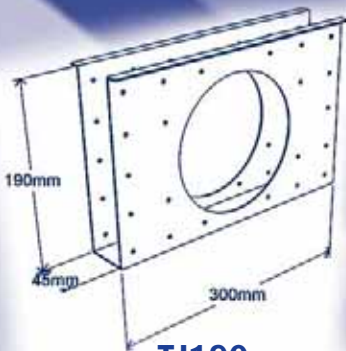
FIXING NOTE

1. Bracket needs to be installed firmly up against under side of joist and all holes nailed off before drilling service duct hole.
2. Galv Bracket 30mm x 3.15 dia hot dip galvanised nails to be used in NZ.
3. Galv Bracket 35mm x 3.15 dia hot dip galvanised nails to be used in Australia.
4. Nail ALL holes.
5. Maximum hole cut is 121mm dia in 190mm, 240 and 290mm THRU-JOIST™ or 68mm dia in 140mm THRU-JOIST™ brackets.
6. Use TJ140 on 140mm joist, TJ190 on 190mm, TJ240 on 240mm and TJ 290 on the 290mm joist.
7. Obtain fall for plumbing pipes by drilling holes at varying heights, within drilling circle, on adjacent joists.
8. No limitation on where THRU-JOIST™ brackets may be installed along the length of joist.
9. Use of multiple brackets on one joist must have minimum of 1500mm spacing between centres.
10. NOT TO BE USED IN EXTERIOR OR SUB FLOOR SITUATIONS.
11. Nails are not provided.
12. The purchaser is responsible for checking that THRU-JOIST™ brackets are suitable for there intended use.

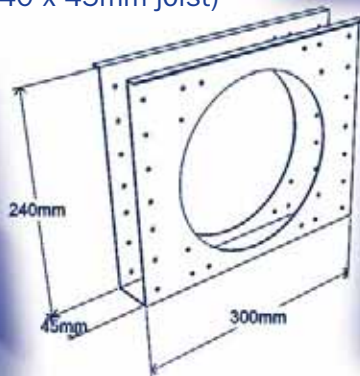


TJ140
(for 140 x 45mm joist)

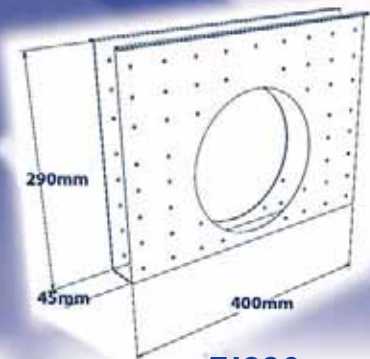
NZ Reg. Design	Aust. Reg Design
App 410058 - 2007	318486
410059 - 2007	318487
410060 - 2007	318488
410061 - 2007	318489



TJ190
(for 190 x 45mm joist)



TJ240
(for 240 x 45mm joist)



TJ290
(for 290 X 45mm joist)

The full THRU-JOIST™ Bracket range are available nationwide from leading building supply merchants.

BRACE-IT™ LIMITED designs and markets a range of THRU-JOIST™ brackets and can be contacted at PO Box 558, Whangaparaoa, Auckland 0943, New Zealand.
Phone +64 9 424 0916 Fax +64 9 424 0475
email info@brace-it.com www.brace-it.com

Copyright©2007/2008 Brace-It™ Limited. All rights reserved.

No copying, distribution or other use of this work is permitted without the express written consent of Brace-It™ Limited.